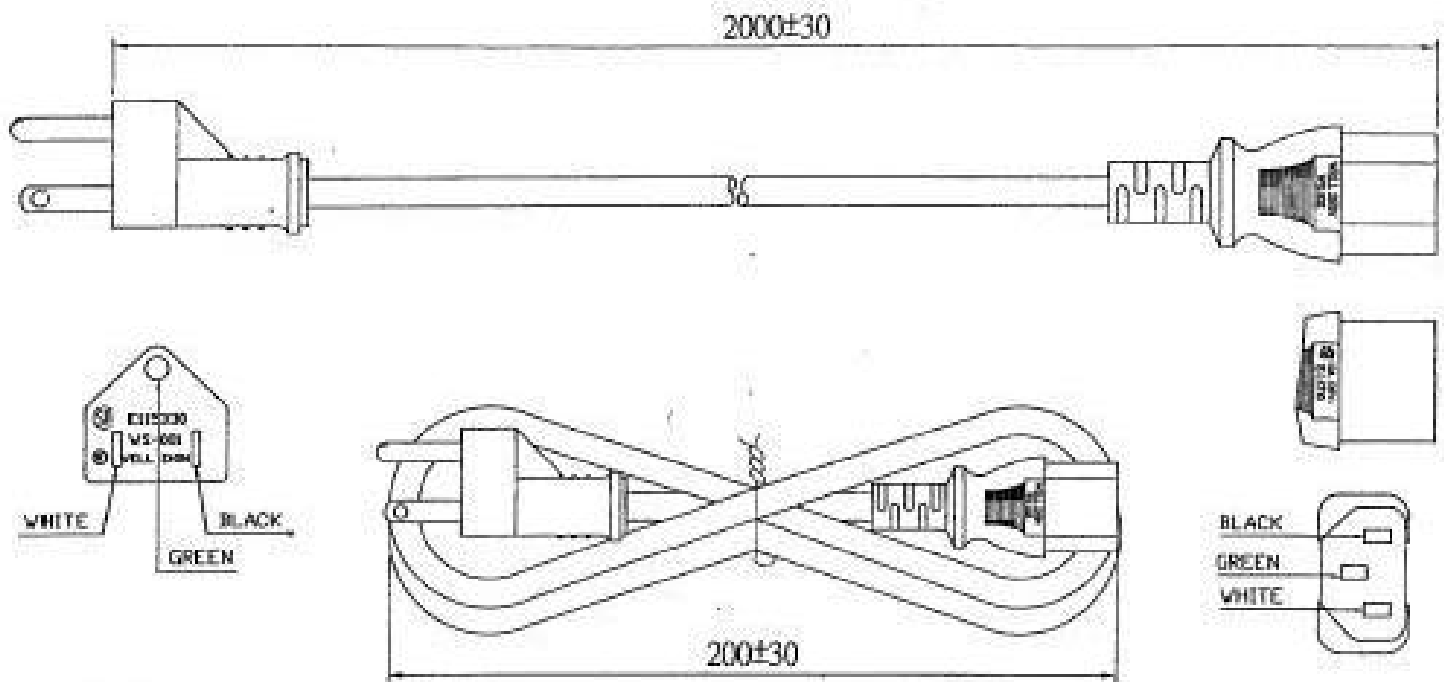


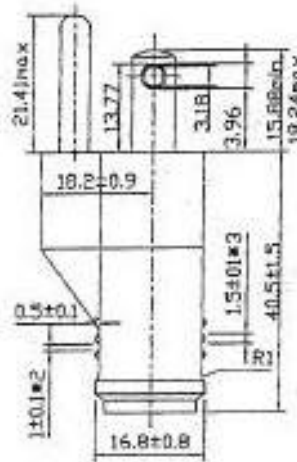
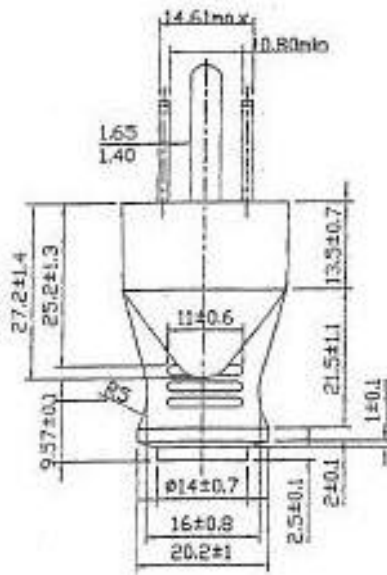
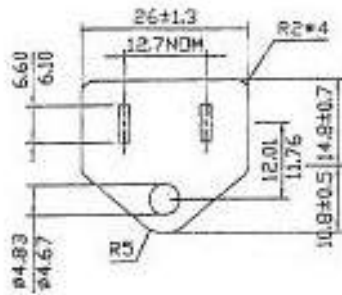
AC POWER CORD

(US STANDARD 3-PRONG
WITH IEC32 COUPLER)

SPECIFICATION:

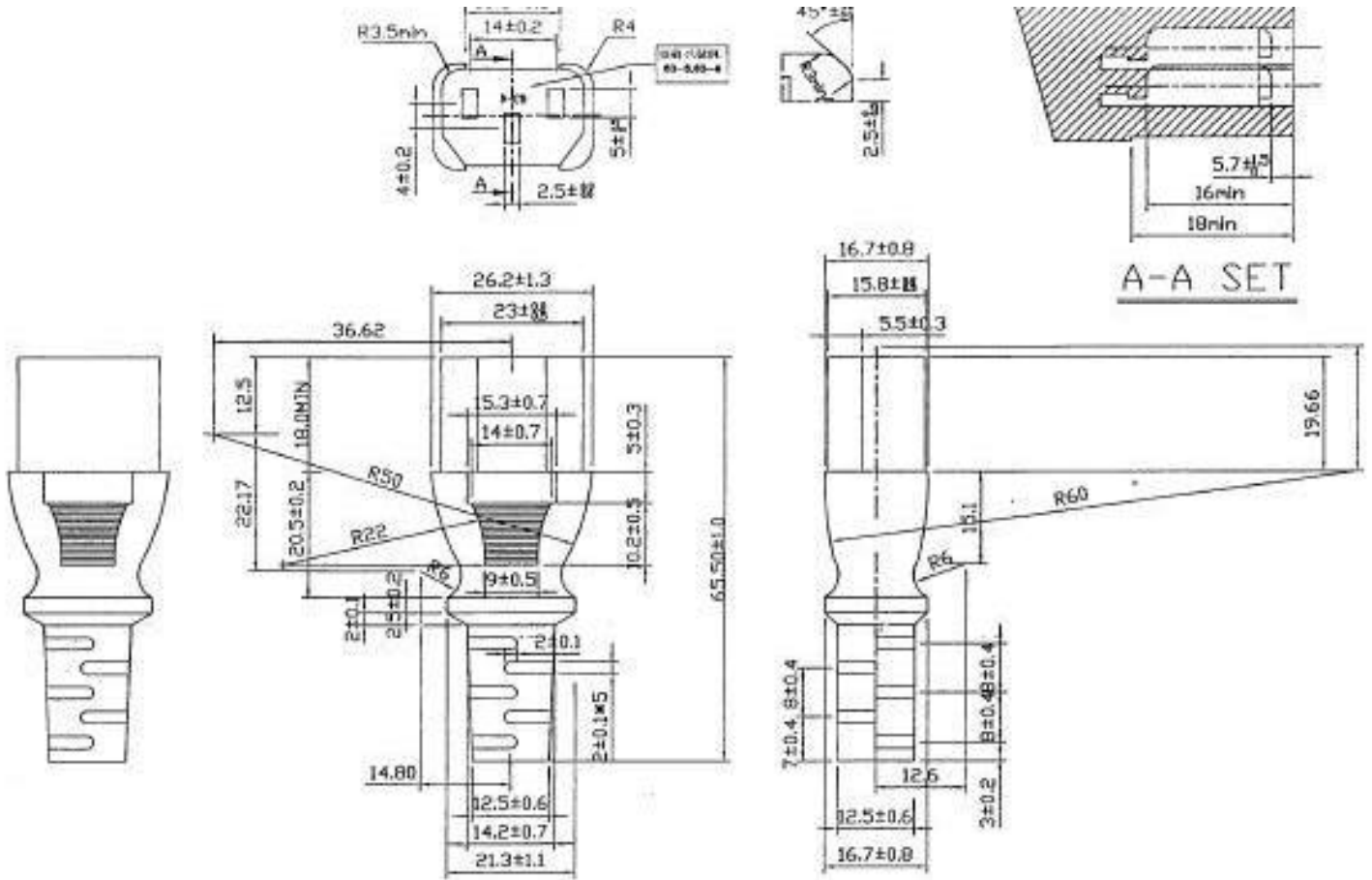
- | | |
|--|---|
| 1) LENGTH: 2000MM | |
| 2) COLOR : BLACK | WIRE COLOR : (BLACK)(WHITE)(GREEN) |
| 3) PLUG : WS-001 (A) 10 (V) 125 | APPROVAL : UL, CSA |
| 4) CONNECTOR : WS-002 (A) 10 (V) 125 | APPROVAL : UL, CSA |
| 5) CABLE : (UL)SVT 18AWG 3C 75°C (CSA)18AWG 3C 60°C | APPROVAL : UL, CSA |
| (CSA) 18AWG 3C 60°C SHIELDED | |





(CABLE OD SIZE):

06.3 07.8 06.7 09.5 010.3
 3.8*8.6 3.8*10 4.0*9.6 5.0*13.0
 4.4*10.7



CABLE OD SIZE

06.0 06.3 06.7 07.0 3.8*7.6 07.8
08.5 09.3

1. **SCOPE:** THIS SPECIFICATION IS APPLIED TO DETACHEBLE POWER SUPPLY CORD CONFORMING TO UL STANDARD 817 AND CSA SPECIFICATION C22.2 NO.1, NO.42.
2. **CONSTRUCTION AND DIMENSION:** ATTACHED DRAWING AND TABLE 1.

WS-001+WS-002 SHIELEDDED	UL	CSA	MANUFACTURER
PLUG & CONNECTOR	E 115330	LL 81946	WELL SHIN
FLEXIBLE CORD	E 90165	LL 57855	DA TUNG
	E 90165	LL 57855	WELL SHIN

TABLE 1

MARKING:

PLUG: WELL SHIN WS-001 E115330 CSA

CORD: (UL) SVT E90165 75°C VW-1 18AWGX3C SHIELEDDED DA TUNG (WELL SHIN)
CSA TYPE SVT 60°C 18AWGX3C SHIELEDDED FT2 LL57885

CONNECTOR: WELL SHIN WS-002 10A 125V E115330 CSA

TYPE	CONDUCTOR			PVC SHEATH		TEMP	MAX RATING	
	AWG/C	MM2	CONSTRUCTION	DIAMETER (O.D)	PVC THICK	°C	/KM/20° C (OHM)	AMP/V
SVT 18AWGX3C SHIELEDDED	18/3	0.82	41/0.16	6.5±0.2	0.76	60	20.9	10A/300V

TABLE 2