



-AC Input-

Voltage/Current.....	AC 90-264V, 47-63Hz, 5.5A Max, 1 Phase.
Fusing.....	AC 6.3A, 250V internal line fuse provided, non-user serviceable.
Power Factor	>0.99 line PFC typical at AC 115V, full load.
Inrush Current	Thermistor soft start (~25°C cold start). 15Apk @ AC 115V, 30Apk @ AC 230V.
Transient Protection	MOV. Withstands transients as specified by EN61000-4-5 (differential / common mode).
EMI Filtering.....	Meets CISPR22B Level B, and EN 55022 Level B.
Efficiency	70% typical at AC 115V, full load.
Redundant/Hot Swap.....	Full power N+1 redundant, hot swap capable.

-DC Outputs-

Voltage/Current (V/A)....	Refer to Model Chart.
Line/Load Regulation.....	<±1% at the sense point over full AC input range and 0 – 100% output loading, sense leads connected.
Minimum Loading	None required for single unit applications. 10% loading required in N+1, N2 configurations.
Output Turn-on Delay	<2 sec from AC turn on. <100 msec from remote enable.
Over/Under Shoot	None at turn-on or turn-off.
Stability	Output drift <±0.2% after 20 min. warm-up.
Temp. Coefficient	<±0.02%/°C, 0-50°C, after 20 min. warmup.
Dynamic Response	Less than 3% deviation with a 25% load change at 1A/μsec. Output recovers to within 1% in less than 300μsec.
Ripple & Noise (PAR)	50mV max or <1% peak-to-peak nominal, whichever is greater, at the output terminals with a 20 Mhz bandwidth limit. May be measured with 0.1μF ceramic capacitor in parallel with a 22μF tantalum.
Current Sharing/ Parallel N+1 Operation.....	Single wire connection for ±10% current sharing between any number of units.
Remote Sense.....	Output compensates for up to 0.5V total line drop in the load cables. Output internally sensed if leads are opened.
Over Temperature Protection	Internal temperature sensing. Automatic recovery.

General Product Specifications:

1U()Q Model Series **200W – 300W, Multiple Output.**

Hold-up Time.....	Output remains in regulation >20msec minimum following loss of AC power at low line, full load.
Over Current/Short Circuit Protection	Load current hiccup (cycles on/off). Automatic recovery when overload is removed.
Over Voltage Protection	Non-crowbar type. Output exceeding 25%±10% of nominal Vout will cause the out-put to latch off. Remote enable or AC input recycle required to reset.

-Signals, Indicators and Controls-

Remote Enable.....	Enabled by closed circuit or TTL logic 0. Disabled by open circuit or TTL logic 1.
Power Fail Warning	Loss of input AC causes a TTL compatible signal to go low >4msec prior to the output dropping out of regulation. At AC turn-on, signal stays low until the output is in regulation. PF signal also triggered by an under voltage condition (V-out 10% below V-nom)
LED Indicator	Front panel mounted, single-color LED. Green indicates AC power ON and output within regulation. Off indicates an input and/or output power fault.

-Operating Environment-

Operating Temperature ..	0° – 50°C ambient at full load, with specified airflow. Derates linearly to 50% at 70°C.
Cooling.....	Provided with internal single or dual DC ball bearing fans dependant on output power, rated 9 cfm minimum each. Forward airflow intake is at end opposite of I/O terminations.
Relative Humidity	Up to 90% RH, non-condensing.
Operating Vibration	0.75G peak, 5 – 500Hz along three orthogonal axis.
Storage Temperature	-40° to 85°C.
Altitude	Operating to 10,000 ft. Storage to 30,000 ft.
MTBF	Designed for 150,000 hours at 25°C.

-Interconnect-

Multiple Output Model...	38-circuit, sequential contact, hot pluggable type. Positronic Ind. P/N PCIH38M400A1-241.1. Mates with PI P/N PCIH38F300A1
---------------------------------	--

Note: Use of the specified mating connector is required to insure proper "make/break" sequential contact sequence.

Multiple Output Models

Model:	Input: ~100-240V 50/60Hz Single Phase	V1 (Main) Output: Volts @ Amps	V2	V3	V4	Fans:
200 Watt:						
	Input Amps: 3.0A Max					
1UEQ201HP		5V, 25.0A	3.3V, 25.0A			
1UEQ202HP		5V, 25.0A	12V, 10.0A			
1UEQ203HP		5V, 25.0A	15V, 6.0A			
1UEQ204HP		3.3V, 25.0A	12V, 10.0A			
1UEQ301HP		5V, 25.0A	12V, 8.0A	12V, 3.0A		
1UEQ302HP		5V, 25.0A	3.3V, 20.0A	12V, 3.0A		
1UEQ303HP		5V, 25.0A	12V, 8.0A	5V, 4.0A		
1UEQ304HP		5V, 25.0A	15V, 6.0A	15V, 3.0A		
1UEQ305HP		5V, 30.0A	15V, 2.0A	15V, 2.0A		
1UEQ401HP		5V, 25.0A	12V, 8.0A	12V, 3.0A	12V, 3.0A	
1UEQ402HP		5V, 25.0A	12V, 8.0A	12V, 3.0A	5V, 3.0A	
1UEQ403HP		5V, 25.0A	3.3V, 15.0A	12V, 3.0A	12V, 3.0A	
1UEQ404HP		5V, 25.0A	3.3V, 15.0A	12V, 3.0A	5V, 3.0A	
300 Watt:						
	4.5A Max					
1UFQ201HP		5V, 40.0A	3.3V, 40.0A			
1UFQ202HP		5V, 40.0A	12V, 15.0A			
1UFQ203HP		5V, 40.0A	15V, 15.0A			
1UFQ204HP		3.3V, 40.0A	12V, 15.0A			
1UFQ301HP		5V, 30.0A	12V, 10.0A	12V, 3.0A		
1UFQ302HP		5V, 30.0A	3.3V, 30.0A	12V, 3.0A		
1UFQ303HP		5V, 30.0A	12V, 10.0A	5V, 3.0A		
1UFQ304HP		5V, 30.0A	15V, 8.0A	15V, 3.0A		
1UFQ305HP		3.3V, 30.0A	12V, 10.0A	12V, 3.0A		
1UFQ401HP		5V, 30.0A	12V, 9.0A	12V, 3.0A	-12V, 1.0A	
1UFQ402HP		5V, 30.0A	12V, 9.0A	12V, 3.0A	-5V, 1.0A	
1UFQ403HP		5V, 30.0A	3.3V, 30.0A	12V, 3.0A	-12V, 1.0A	
1UFQ404HP		5V, 30.0A	3.3V, 30.0A	12V, 3.0A	-5V, 1.0A	

1U()Q Multiple Output Input/Output and Signal Connector Type and Pin Functions:

Positronics Ind. P/N PCIH38M400A1.315. 38-circuit hot plug-able type. Glass filled polyester insulator material, rated 94V-0. Secured in the unit rear. Use of Positronic PCIH38F300A1 series mating connector is required to ensure correct mating contact sequence and current capacity.

<u>PIN#</u>	<u>SEQ</u>	<u>FUNCTION</u>	
01-02	2	N/U	Not Used.
03-04	2	+5.0V	V1 Output.
05-06	2	GND	V1 Return.
07-10	2	N/U	Not Used.
11-12	2	GND	V2 Return.
13-14	2	+3.3V	V2 Output.
15-16	2	N/U	Not Used.
17	2	+12.0V	V3 Output.
18	2	GND	V3 Return.
19,20	2	N/U	Not Used.
21	2	-12.0V	V4 Output.
22,23	2	GND	V4 Return.
24	2	+S1	+5.0V (V1) Remote Sense.
25	3	R/EN	Remote Enable. Close circuit to GND.
26	2	S-RTN	Sense Return for V1, V2.
27	2	+S2	+3.3V (V2) Remote Sense.
28-30	2	N/U	Not Used.
31	2	R/INH	Remote Inhibit. Close circuit to GND.
32	3	ISHR-1	+5.0V (V1) Current Share.
33	3	ISHR-2	+3.3V (V2) Current Share.
34	3	N/U	Not Used.
35	2	PF	Power Fail Signal.
36	1	PE	Primary Earth (chassis) Safety Ground.
37	2	ACC	Neutral AC Power Input.
38	2	AC	Line AC Power Input.

Indicators and Controls:

LED 1: DC Power Good. Located on the front panel. The power supply is functioning within specifications when the LED indicator is green. Off indicates an input or output fault condition.

Power Fail Warning.....P1-35. Loss of input AC causes a TTL compatible signal to go low >4mSec prior to the output dropping out of regulation. At AC turn-on, signal stays low until output is in regulation. PF signal also triggered by an under voltage condition (V-out drops 10% below V-nom.)

Remote Sense..... P1-24, P1-26, P1-27. V1, V2 outputs compensate for up to 0.5V total line drop in the load cables.

Current Sharing/
Parallel N+1 Operation..... P1-32, P1-33. Single wire connection for V1 and V2. ±10% current sharing between any number of units.

Remote DC Enable P1-25. Enabled by closed circuit or TTL logic 0. Disabled by open circuit or TTL logic 1.

Remote DC Inhibit P1-31. Enabled by open circuit or TTL logic 1. Disabled by closed circuit or TTL logic 0.

Other Features:

Undervoltage Protection..... Auto DC output shutdown when AC input falls below safe operating limits (≈ 80VAC). Automatic recovery.

Minimum Loading..... None required.

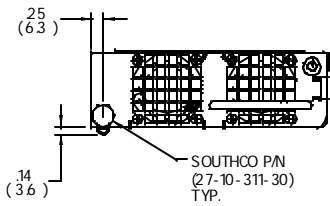
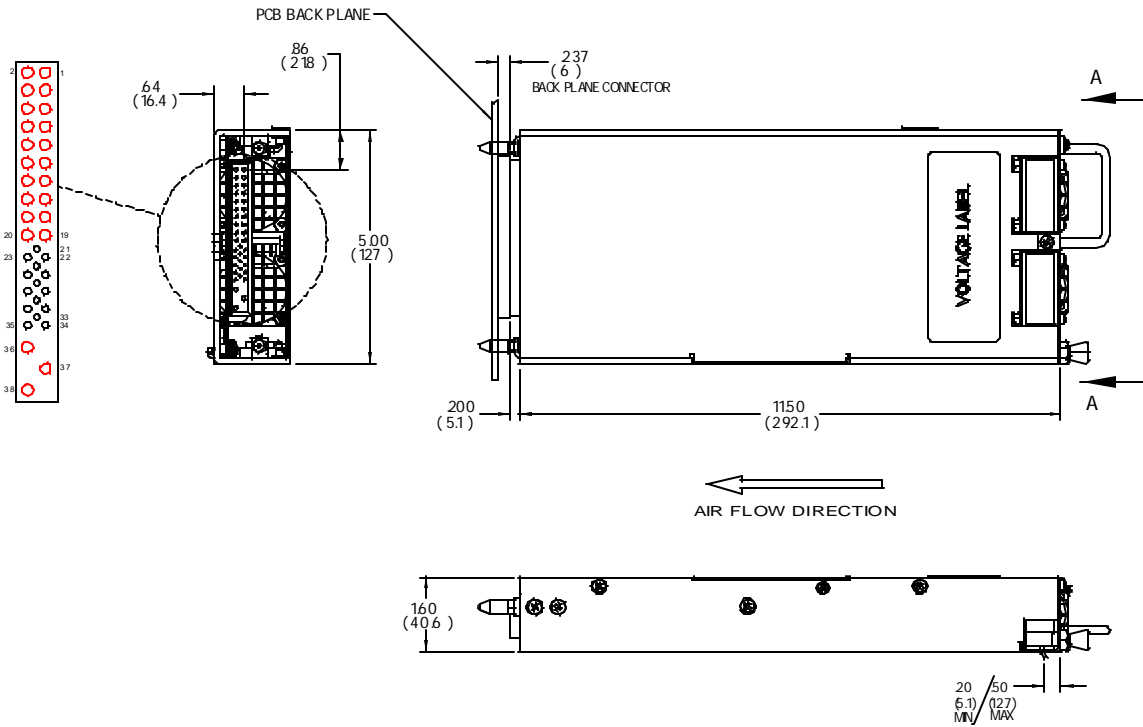
Over Current/Short
Circuit Protection Standard hiccup mode (on/off cycle) current limit when Vout current is >105% to 120% of full load. Automatic recovery when overload is removed.

Over Voltage Protection Non-crowbar type. Any output that exceeds 25% ±10% of nominal Vout will cause Vout to latch off. Remote enable or AC input recycle required to reset.

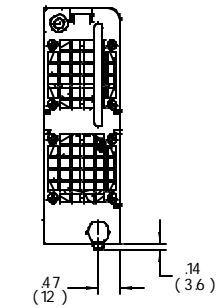
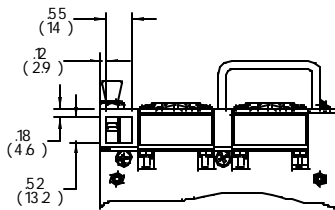
Over Temperature
Protection Internal temperature sensing. Causes Vout to shut down. Automatic recovery.

Mechanical Specifications

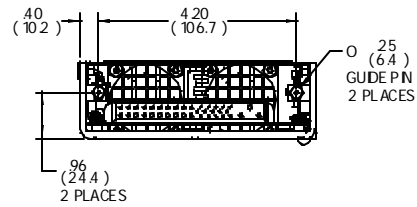
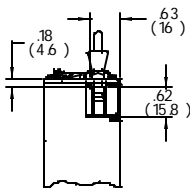
Multiple Output



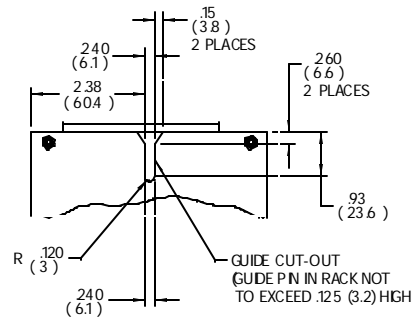
VIEW A (1)
ROTATED 90° CW
HORIZONTAL MOUNT CONFIGURATION



VIEW A (2)
VERTICAL MOUNT CONFIGURATION



ALIGNMENT OPTION 1
(FOR HORIZONTAL AND VERTICAL MOUNT CONFIGURATIONS)



ALIGNMENT OPTION 2
(FOR HORIZONTAL MOUNT CONFIGURATION ONLY)

ETA-USA

16315 Vineyard Blvd.
Morgan Hill, CA 95037

Ph: 408-778-2793

Fax: 408-779-2753

e-mail: sales@eta-usa.com

Web: www.eta-usa.com