



DTA-SX-W

27W

**FEATURES:**



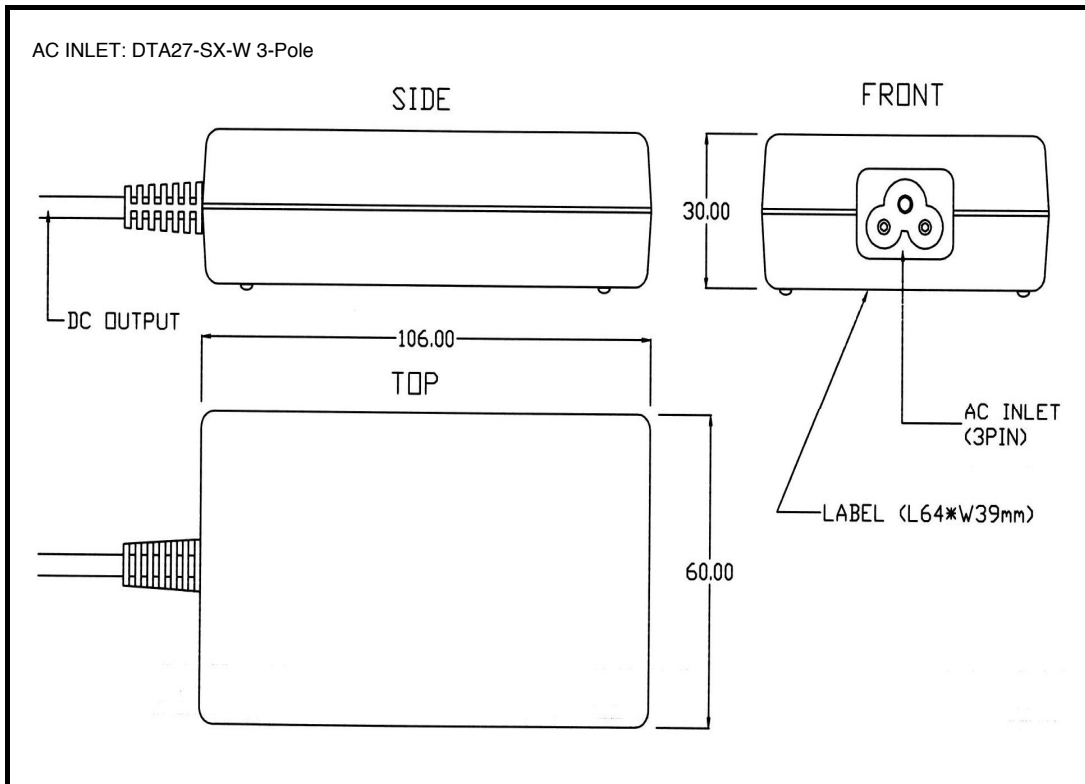
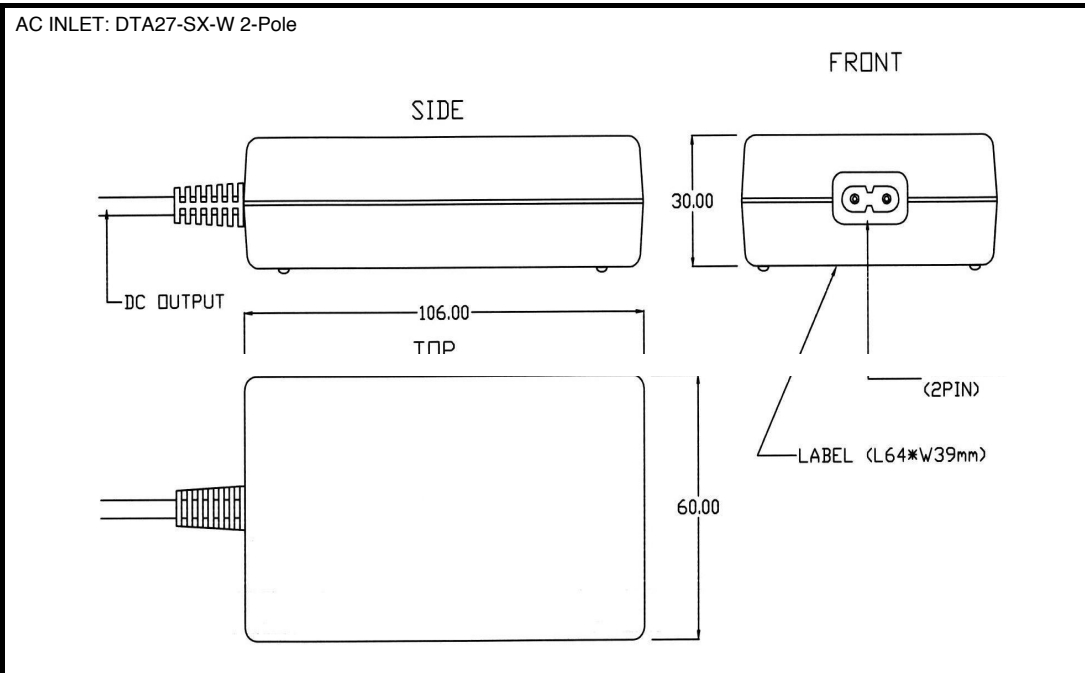
MODEL/CHANNEL		Unit	DTA27-09 SX-W 2-Pole	DTA27-10 SX-W 2-Pole	DTA27-11 SX-W 2-Pole
<b>OUTPUT</b>	Output Voltage	Vdc	9	10	11
	Output Current	A	3.0	2.7	2.45
	Ripple & Noise(max) *3	mV	90	100	110
	Efficiency	%	>80% 115VAC at full load (DC Conversion)		
	Max Power	W	27W		
	Voltage Regulation	%	±3%		
	Hold Up Time	V	10ms typical at full load @ 115VAC		
MODEL/CHANNEL		Unit	DTA27-09 SX-W 3-Pole	DTA27-10 SX-W 3-Pole	DTA27-11 SX-W 3-Pole
	Output Voltage	Vdc	9	10	11
	Output Current	A	3.0	2.7	2.45
	Ripple & Noise(max) *3	mV	90	100	110
<b>INPUT</b>	Input Voltage	Vac	90~264VAC		
	Input Current	A	1A@264Vac; 2A@90Vac		
	Frequency	-	47~63Hz		
<b>Protection</b>	Over Voltage Protection	-	Auto Recovery		
	Short circuit protection	-	Auto Recovery		
<b>Environmental Agencies</b>	Safety	-	UL 1950	CSA 22.2-234	TUV EN60950 IEC 950 CE: EMC &LVD
	EMC	-	FCC Class B; CISRP22 Class B; EN 55022 Class B		
	MTBF	-	100,000 hours at full load and 25°C ambient temperature.		
<b>Environment</b>	Operating Temperature	-	0°C to 40°C		
	Storage Temperature	-	-10°C to +70°C		
<b>Dimension</b>	Size(WxHxD) / Weight	mm/g	106(L) × 60(W) × 30(H)mm		





## MECHANICAL DIMENSIONS

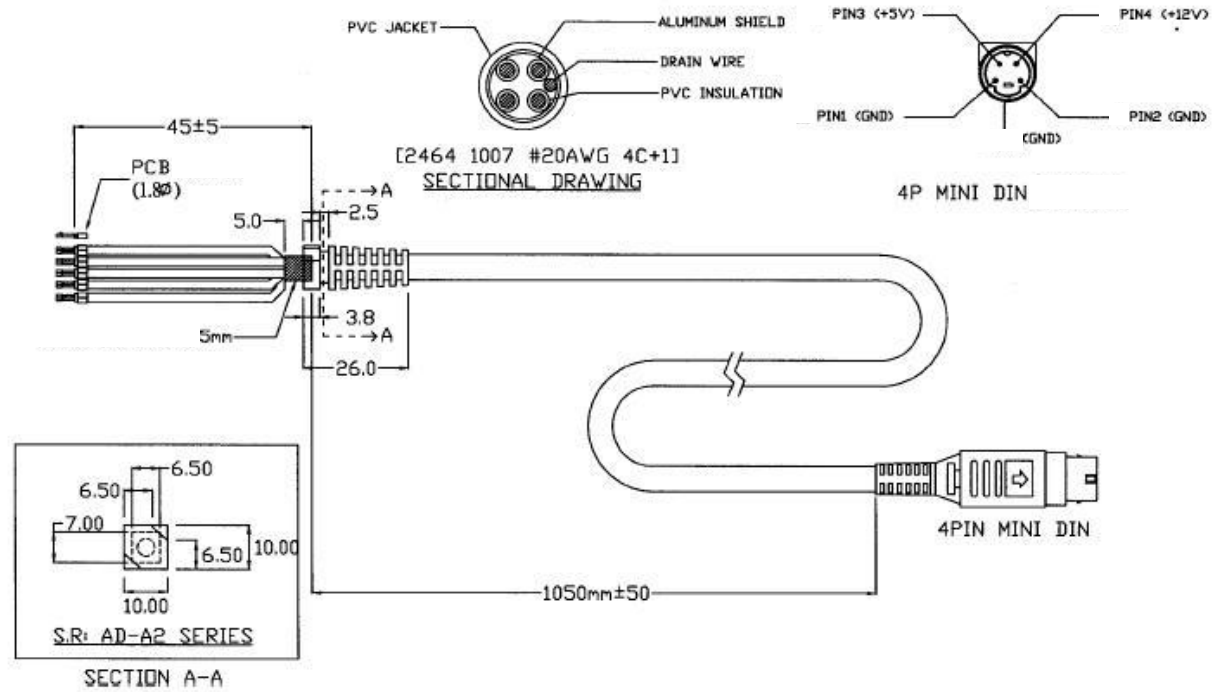
27W





## MECHANICAL DIMENSIONS

27W



	DC CORD 1050mm(4PIN MINI-DIN)				1.CABLE:COLOR:BLACK ULCSA 2464 80/90°C 300V 20AWGX4C+ ALUMINUM SHIELD	Rev. D
	AD-A2 LAMEXA				2.PVC WIRES : UNC COLOR:BLACK / RED / YELLOW / BLUE	Rev. E
	B3-MAE-02-70		mm		3.CONNECTOR : 4PIN POWER-DIN	
	09-40000047		1 : 1			
			H			
			91.12.19			

