



DTA-0512FWX-W

27W



FEATURES:

- 3-pole IEC320-C6 Class I and C8 Class II AC inlet available
- 2 year warranty
- Black color plastic enclosed case



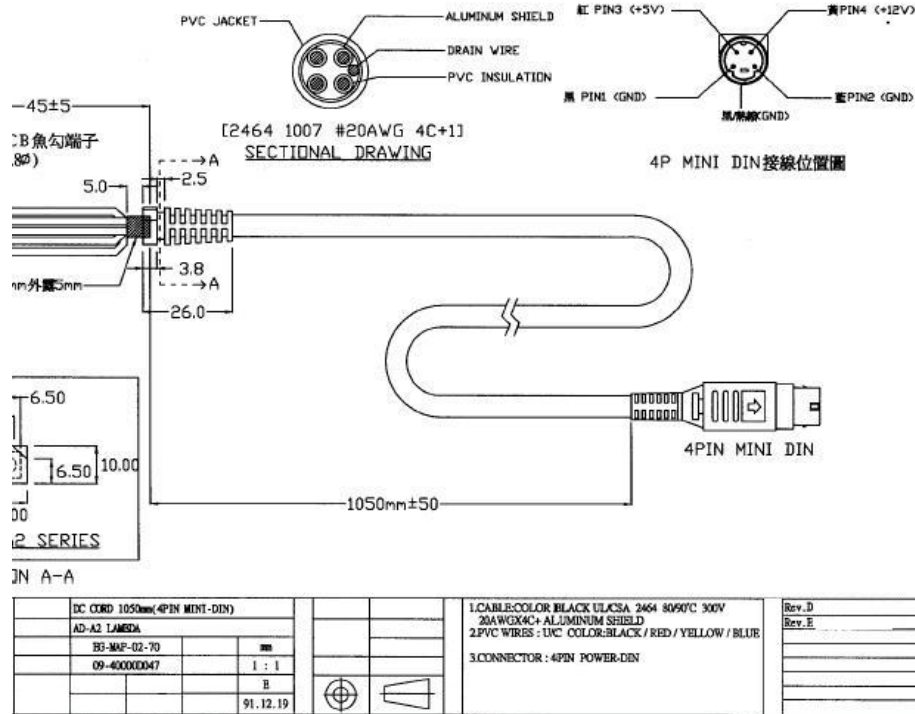
MODEL/CHANNEL		Unit	DTA27-0512FWX-W 2-Pole			DTA27-0512FWX-W 3-Pole	
OUTPUT	Output Voltage	Vdc	+5	+12	+5	+12	
	Output Current Min.	A	0.5	0.1	0.5	0.1	
	Output Current Max.	A	2~5	0.2~1.5	2~5	0.2~1.5	
	Ripple and Noise(max.) *3	mV	50	120	50	120	
	Voltage Regulations	-	±5%				
	Hold Up Time	-	10ms typical at full load @ 115VAC				
	Power	W	27W				
INPUT	Input Voltage	Vac	90VAC~264VAC				
	Input Current	A	1A@264Vac 2A@90Vac				
	Line Frequency	Hz	47Hz to 63Hz				
	Efficiency	A	>70% 115VAC at full load (DC Conversion)				
Protection	Over Voltage Protection	-	Auto Recovery				
	Short circuit protection	-	Auto Recovery				
Environmental Agencies	Safety	-	UL 1950	CSA 22.2-234	TUV EN60950	IEC 950	CE: EMC &LVD
	EMC Standards	-	FCC Class B; CISRP22 Class B; EN 55022 Class B				
	MTBF	-	>100'000 hours at full load and 25°C ambient temperature.				
Environment	Operating Temperature	-	0°C to 40°C				
	Storage Temperature	-	-10°C to +70°C				
Dimension	Size(WxHxD) / Weight	mm/g	106Lx60Wx 30H				





Dimension Diagram (mm)

27W





Dimension Diagram (mm)

27W

