



## WRC-FWX-O

## 75W AC/DC



### Features

- Auto Selectable
- Compact design with Inrush current protection
- Dual Output
- WRC21FWX-O: 5V, 24V
- WRC24FWX-O: 5V, 12V
- 2 year warranty

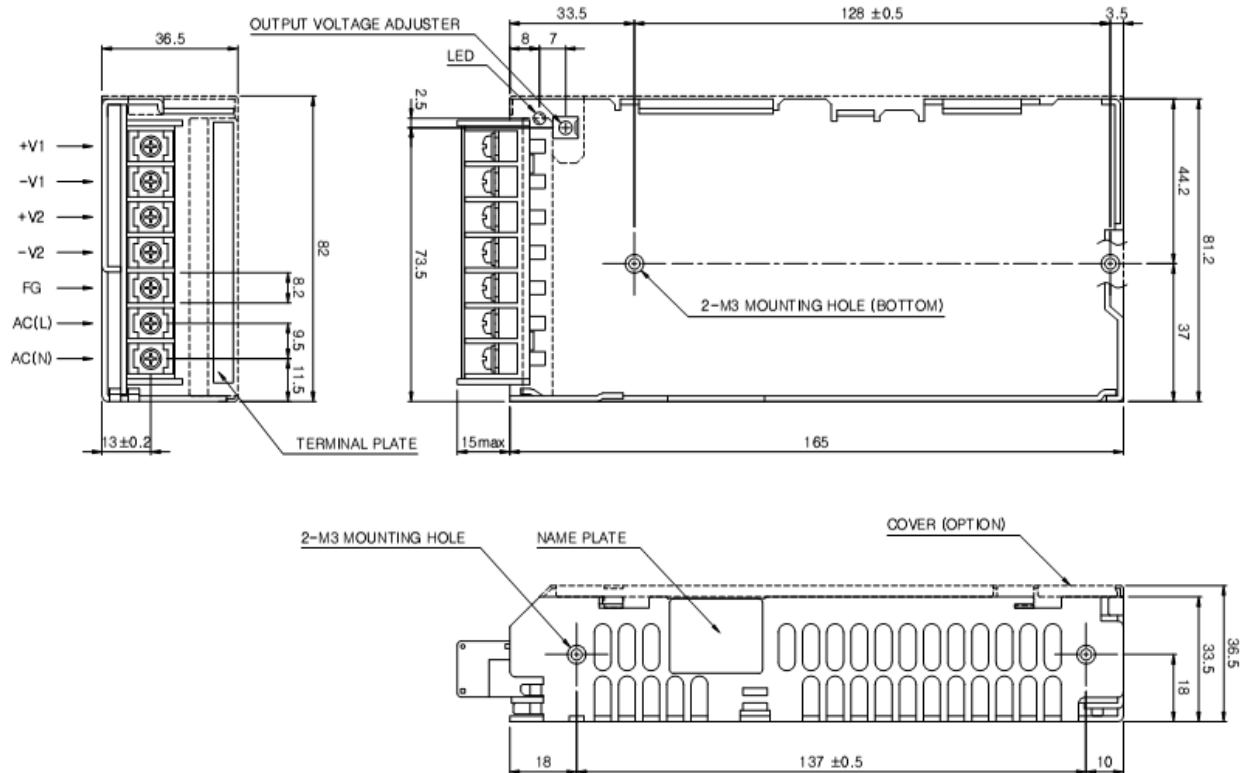
CE PENDING

MODEL/CHANNEL		Unit	WRC21FWX-O		WRC24FWX-O	
<b>OUTPUT</b>	Nominal Voltage	V	5	12	5	24
	Current	A	0.6~6	0~3.5	0.5~6	2
	Ripple	mV	80	120	50	120
	Ripple & Noise Max.	mV	120	150	120	150
	Line Regulations	mV	25	60	25	120
	Load Regulations	mV	75	180	75	360
	Load Regulations	mV	50	120	50	240
	Efficiency	%	75			
	Maximum Power	V	120			
	Rise Time	mS	500 max [AC IN 100V Io=100%]			
	Hold Up Time	mS	17typ [AC IN100V, Io=100%]			
Grounding	-	Individual Ground				
<b>INPUT</b>	Voltage, Frequency	V	AC85V~132V/180V~264V or DC 240V~370V, 50/60Hz (47~440Hz), Auto Selectable			
	Current Typ.	A	1.8A at 110V; 0.1 A at 220V (Io=100%)			
	Inrush Current Typ.	A	20A typ (AC IN 110V, Io=100%), 40A typ (AC IN 220V, Io=100%), at cold start			
	Leakage	mA	0.35 mA @ 110, 0.75 mA @220			
<b>Function</b>	Over Voltage Protection	V	Works at 115~140% of rating			
	Over Current Protection	A	Works at 110% over rated current and recovers automatically			
<b>Electrical Isolation</b>	Input - Output	-	AC 3,000V 1 minute current 20mA, DC 500V 100MΩ (At room temperature & humidity)			
	Operating temp. & Humidity	-	-10~ +70°C, 20~90% RH(Non condensing)			
	Storage temp. & Humidity	-	-20~ +75°C, 20~90% RH(Non condensing)			
	Input F.G.	-	AC 2,000V 1 minute current 20mA, DC 500V 100MΩ (At room temperature & Humidity)			
	Output F.G.	-	AC 500V 1 minute current 100mA, DC 500V 100MΩ (At room temperature & Humidity)			
	Vibration	-	10~55Hz at 1G, 3 minutes period, 30 minutes along X, Y and Z axis			
	Impact	-	10G for 20ms once on each X, Y and Z axis			
<b>Dimension</b>	Size(LxWxH) / Weight	mm/g	82x36.5x165(180)/450			
	<b>Safety</b>	-	CE, IEC 60950-1, EN55022-A			





## Dimension Diagram (mm)

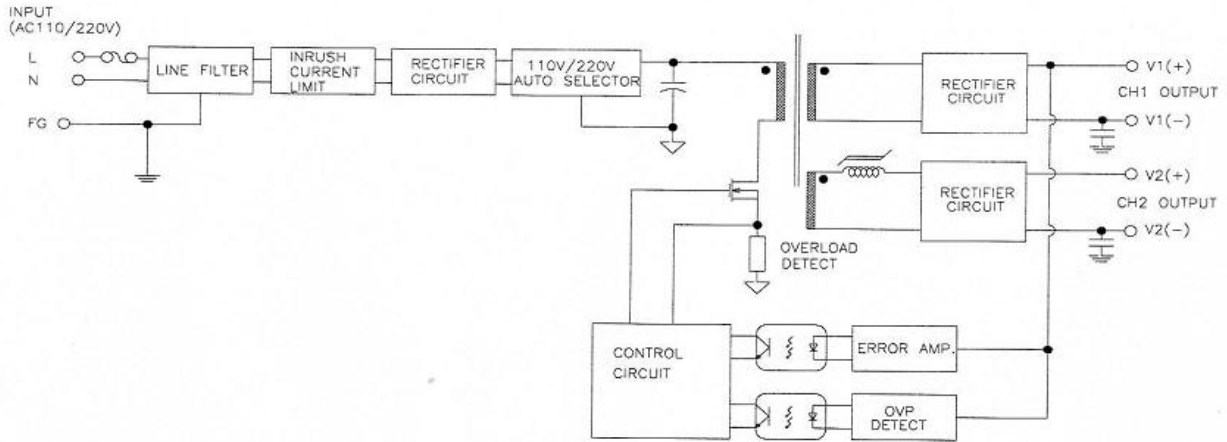


Mark	Pin Connection
L	AC input line
N	AC input neutral
FG	AC Chassis Ground
+V1	DC V1 Output
G1	DC V1 Ground
+V2	DC V2 Output
G2	DC V2 Ground





## Block Diagram





## Derating Curve

