



## AOJS75

## 75W AC/DC



### Features

- Inrush Current Limit
- Wide Input voltage range
- Universal input voltage 100-240VAC
- Over voltage protection
- Overcurrent protection
- **3 Yr warranty**

CE CB

MODEL/CHANNEL		Unit	AOJS75-3.3	AOJS75-05	AOJS75-09	AOJS75-12	
OUTPUT	Nominal Voltage	V	3.3	5	9	12	
	Current	A	15	12	8	6	
	Rated Power	W	45	60	72	72	
	Ripple	mV	50	50	100	100	
	Line Regulations	mV	17	25	40	60	
	Load Regulations	mV	66	50	90	60	
	Temperature Drift	mV	50	75	135	180	
	Ripple & Noise(pk-pk) (*1)	mV	80	80	120	120	
	Turn-on Time typ.	ms	1500 (AC IN 110/220V, Io=100%)				
	Hold-up Time typ.	ms	14 (AC IN 110/220V, Io=100%)				
INPUT	Voltage, Frequency	V	AC100-240(AC88-264), 50/60HZ(47-440Hz) (Universal Input)				
	Current Typ.	110V 220V	1.3 0.8				
	Efficiency	110V 220V	%	74	78	79	80
	Inrush Current Typ.	110V 220V	A	20 (Ta=25°C, Cold Start) 40 (Ta=25°C, Cold Start)			





## AOJS75

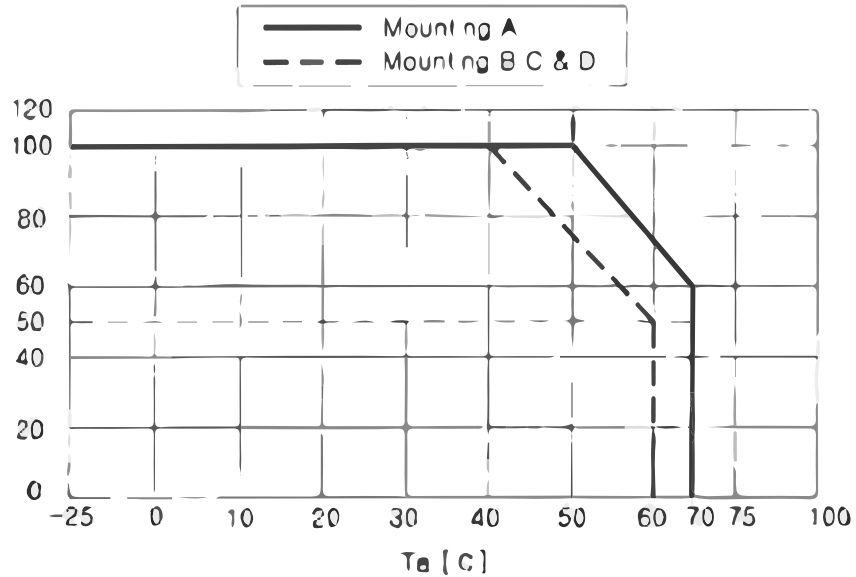
## 75W AC/DC

	MODEL/CHANNEL	Unit	AOJS75-15	AOJS75-24	AOJS75-48
<b>OUTPUT</b>	Nominal Voltage	V	15	24	48
	Current	A	5	3.2	1.6
	Rated Power	mV	75	77	77
	Line Regulations	mV	75	120	240
	Load Regulations	mV	75	120	240
	Temperature Drift	mV	225	360	720
	Ripple & Noise(pk-pk) (*1)	mV	120	120	200
	Hold-up Time typ.	ms	14 (AC IN 110/220V, lo=100%)		
<b>INPUT</b>	Voltage, Frequency	V	AC100-240(AC88-264), 50/60Hz(47-440Hz)(Universal Input)		
	Current Typical	110V 220V A	1.6 1		
	Efficiency Typ.	110V 220V %	84	85	86
	Inrush Current Typical	110V 220V A	20(Ta=25°C, Cold Start) 40(Ta=25°C, Cold Start)		
<b>Function</b>	Over Voltage Protection	V	Works at 115~140% of rating		
	Over Current Protection (*2)	A	Works @110% of rating		
<b>Electrical Isolation</b>	Input - Output	-	AC 3KV 1min., cut-off: 20mA / DC 500V 100 MO		
	Input - F.G	-	AC 2KV 1min., cut-off: 20mA / DC 500V 100 MO		
	Output - F.G	-	AC 0.5 KV 1min., cut-off: 100mA / DC 500V 100 MO		
<b>Environment</b>	Operating temp. & Humidity	-	-10 ~+70°C (with derating, lo=100% to 50% when 50°C to 71°C) 20~90% RH(Non Condensing)		
	Storage temp. & Humidity	-	-20 ~+75°C, 20~90% RH (Non Condensing)		
	Vibration	-	10~55Hz @ 1G 3 minutes PERIOD, 30 minutes along X, Y, & Z axis		
	Impact	-	10G for 20ms, once on each X, Y, Z axis		
<b>Dimension</b>	Size(LxWxH)/Weight	mm/g	129Lx98Wx38H/600		
	Safety	-	CB, CE, RU		
	Emission	-	Complies with EN55011, EN55022-B, FCC-B		





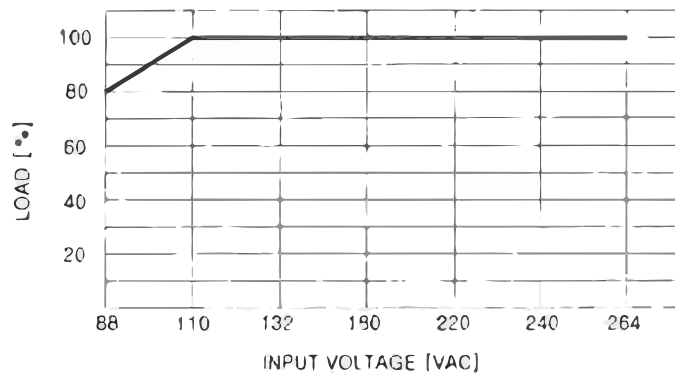
## Derating Curve



## Derating Curve

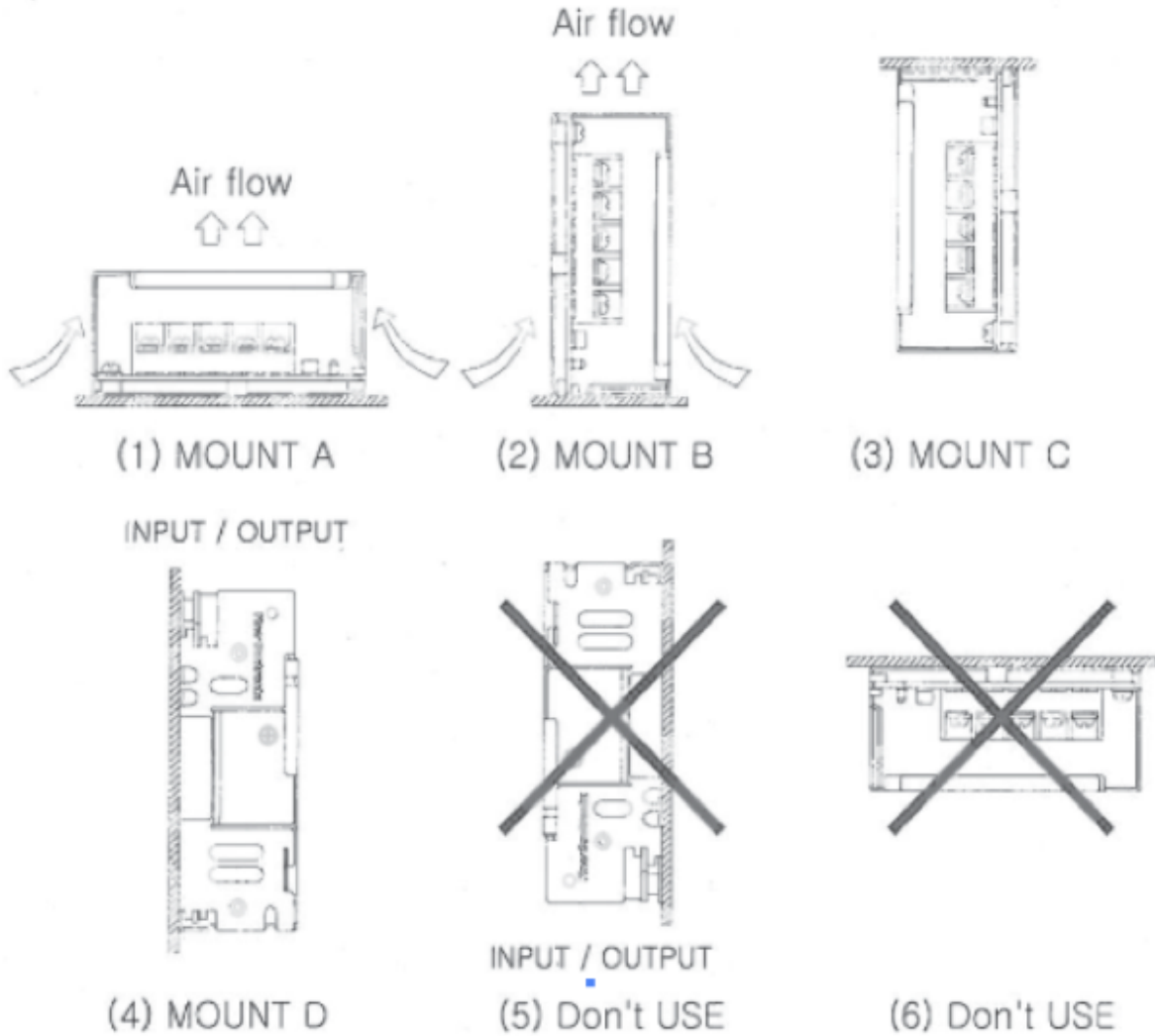
Expected Life and Warranty

Mounting Method	Annual Average of Ambient Temperatures	Warranty	
		Load factor $l_o \leq 50\%$	Load factor $50\% < l_o \leq 100\%$
mounting A	Ta = 40°C or less	3	3
	Ta = 50°C	3	2
mounting B C D	Ta = 30°C or less	3	3
	Ta = 40°C	3	2





## Mounting Device

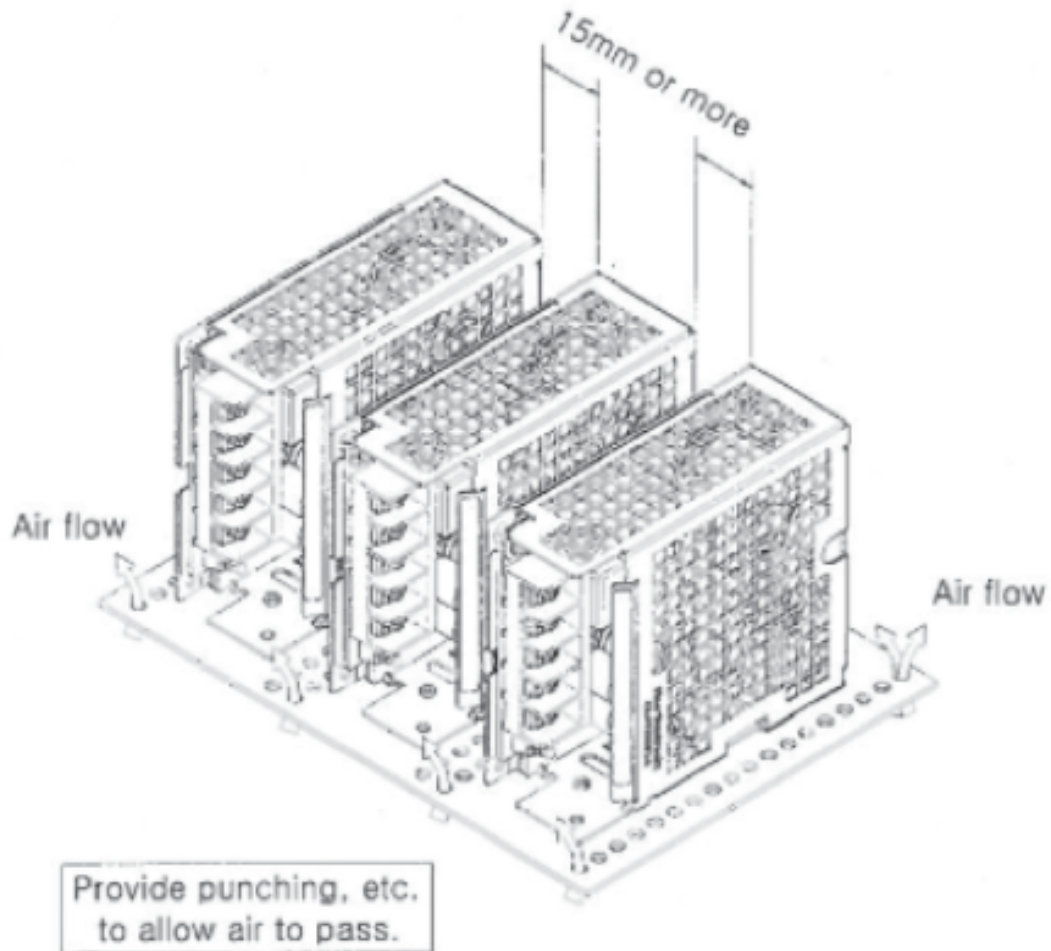




# ETA-USA

The Power Professionals

## Mounting Device



# ETA-USA

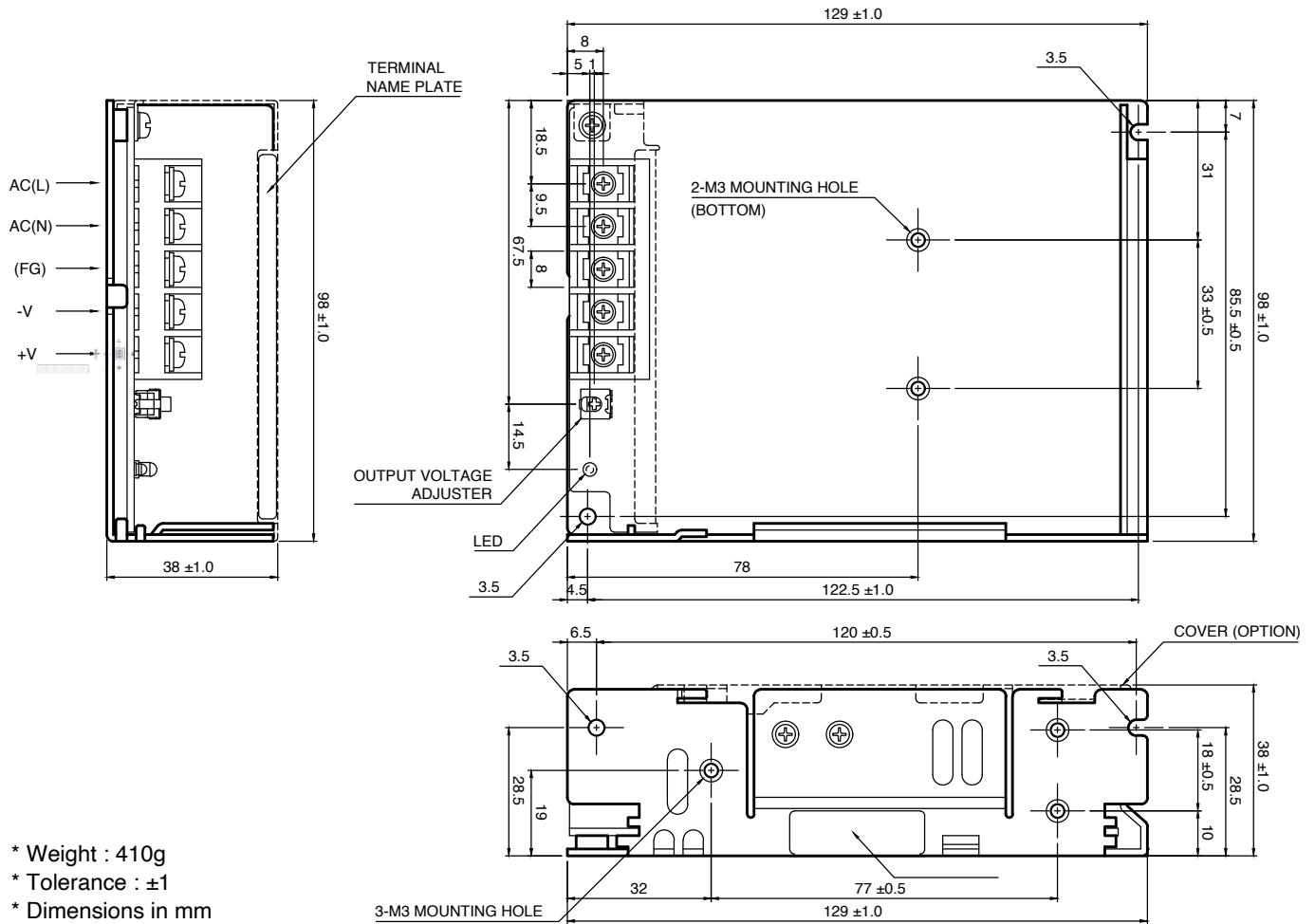
16170 Vineyard Blvd. Suite 180 Morgan Hill, CA 95037 <http://www.eta-usa.com>  
Toll-free (US only): 800-ETA-POWR (800-382-7697) Telephone: 408 778-2793 FAX: 408-779-2753



# ETA-USA

The Power Professionals

## Mechanical Drawings



- \* Weight : 410g
- \* Tolerance :  $\pm 1$
- \* Dimensions in mm



# ETA-USA

16170 Vineyard Blvd. Suite 180 Morgan Hill, CA 95037 <http://www.eta-usa.com>  
Toll-free (US only): 800-ETA-POWR (800-382-7697) Telephone: 408 778-2793 FAX: 408-779-2753